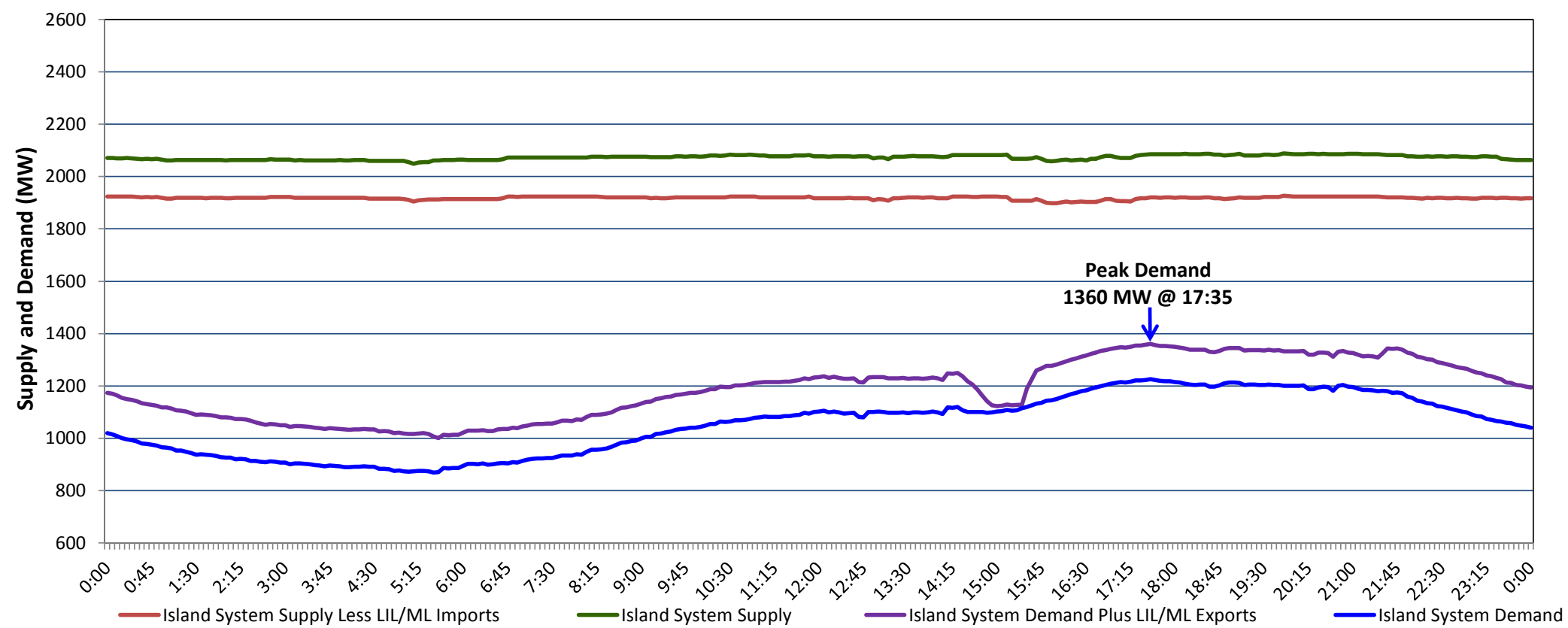


**Newfoundland Labrador Hydro (NLH)  
Supply and Demand Status Report Filed Monday, January 31, 2022**

**Section 1  
Island Interconnected System Supply, Demand & Exports  
Actual 24 Hour System Performance For Sunday, January 30, 2022**



**Supply Notes For January 30, 2022**

1,2

- A As of 1715 hours, January 21, 2022, Holyrood Unit 2 available at 150 MW (170 MW).
- B As of 2255 hours, January 28, 2022, Holyrood Unit 3 unavailable due to planned outage (150 MW).
- C At 0022 hours, January 30, 2022, St. Anthony Diesel Plant unavailable (9.7 MW).
- D At 0130 hours, January 30, 2022, St. Anthony Diesel Plant available (9.7 MW).

**Section 2  
Island Interconnected Supply and Demand**

Mon, Jan 31, 2022	Island System Outlook <sup>3</sup>		Seven-Day Forecast	Temperature (°C)		Island System Daily Peak Demand (MW)	
				Morning	Evening	Forecast	Adjusted <sup>7</sup>
Available Island System Supply: <sup>5</sup>	2,057	MW	Monday, January 31, 2022	0	-2	1,465	1,360
NLH Island Generation: <sup>4,8</sup>	1,525	MW	Tuesday, February 01, 2022	-5	-6	1,430	1,325
NLH Island Power Purchases: <sup>6</sup>	145	MW	Wednesday, February 02, 2022	-7	-4	1,470	1,365
Other Island Generation:	225	MW	Thursday, February 03, 2022	-2	2	1,300	1,197
ML/LIL Imports:	162	MW	Friday, February 04, 2022	-3	-8	1,470	1,365
Current St. John's Temperature & Windchill:	1 °C	N/A	Saturday, February 05, 2022	-5	5	1,390	1,286
7-Day Island Peak Demand Forecast:	1,740	MW	Sunday, February 06, 2022	-12	-15	1,740	1,632

**Supply Notes For January 31, 2022**

3

- Notes:
1. Generation outages for running and corrective maintenance are included. These are not unusual for power system operations. They generally do not impact customer supply. The power system operators schedule outages to system equipment whenever possible to coincide with periods when customer demands are low and sufficient supply reserves are available. However, from time to time equipment outages are necessary and reserves may be impacted.
  2. Due to the Island system having no synchronous connections to the larger North American grid, when there is a sudden loss of large generating units there may be a requirement for some customer's load to be interrupted for short periods to bring generation output equal to customer demand. This automatic action of power system protection, referred to as under frequency load shedding (UFLS), is necessary to ensure the integrity and reliability of system equipment. Under frequency events have typically occurred 5 to 8 times per year on the Island Interconnected System and the resultant customer load interruptions are generally less than 30 minutes. With the activation of the Maritime Link frequency controller during the winter of 2018, UFLS events have occurred less frequently.
  3. As of 0800 Hours.
  4. Gross output including station service at Holyrood (24.5 MW) and improved NLH hydraulic output due to water levels (35 MW).
  5. Gross output from all Island sources (including Note 4).
  6. NLH Island Power Purchases include: CBPP Co-Gen, Nalcor Exploits, Rattle Brook, Star Lake, Wind Generation and capacity assistance (when applicable).
  7. Adjusted for curtailable load, market activities and the impact of voltage reduction when applicable.
  8. Due to limitations inherent in the design of combustion turbines, the output of combustion turbines may be reduced in the event that ambient temperatures exceed the threshold required for full rated output. This threshold is dependent on the design of each turbine.

**Section 3  
Island Peak Demand Information  
Previous Day Actual Peak and Current Day Forecast Peak**

Sun, Jan 30, 2022	Actual Island Peak Demand <sup>9</sup>	17:35	1,360 MW
Mon, Jan 31, 2022	Forecast Island Peak Demand		1,465 MW

- Notes: 9. Island Demand / LIL / ML Exports (where applicable) is supplied by NLH generation and purchases, plus generation owned and operated by Newfoundland Power and Corner Brook Pulp & Paper (Deer Lake Power, DLP).